

CR 343(5)

R/W

TELEDYNE  
FREDERIC POST

FIELD BOOK

No. 9340-100

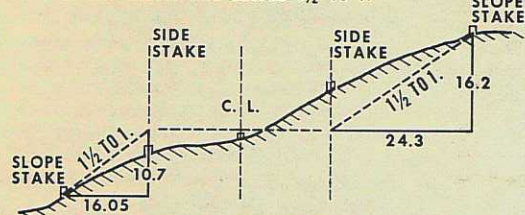


CR 343(5)



### DISTANCES FROM SIDE STAKES FOR CROSS-SECTIONING

ROADWAY OF ANY WIDTH. SIDE SLOPES 1/2 TO 1.



Cut or Fill	Distance out from Side or Shoulder Stake.										Cut or Fill
	0	.1	.2	.3	.4	.5	.6	.7	.8	.9	
0	0 00	0 15	0 30	0 45	0 60	0 75	0 90	1 05	1 20	1 35	0
1	1 50	1 65	1 80	1 95	2 10	2 25	2 40	2 55	2 70	2 85	1
2	3 00	3 15	3 30	3 45	3 60	3 75	3 90	4 05	4 20	4 35	2
3	4 50	4 65	4 80	4 95	5 10	5 25	5 40	5 55	5 70	5 85	3
4	6 00	6 15	6 30	6 45	6 60	6 75	6 90	7 05	7 20	7 35	4
5	7 50	7 65	7 80	7 95	8 10	8 25	8 40	8 55	8 70	8 85	5
6	9 00	9 15	9 30	9 45	9 60	9 75	9 90	10 05	10 20	10 35	6
7	10 50	10 65	10 80	10 95	11 10	11 25	11 40	11 55	11 70	11 85	7
8	12 00	12 15	12 30	12 45	12 60	12 75	12 90	13 05	13 20	13 35	8
9	13 50	13 65	13 80	13 95	14 10	14 25	14 40	14 55	14 70	14 85	9
10	15 00	15 15	15 30	15 45	15 60	15 75	15 90	16 05	16 20	16 35	10
11	16 50	16 65	16 80	16 95	17 10	17 25	17 40	17 55	17 70	17 85	11
12	18 00	18 15	18 30	18 45	18 60	18 75	18 90	19 05	19 20	19 35	12
13	19 50	19 65	19 80	19 95	20 10	20 25	20 40	20 55	20 70	20 85	13
14	21 00	21 15	21 30	21 45	21 60	21 75	21 90	22 05	22 20	22 35	14
15	22 50	22 65	22 80	22 95	23 10	23 25	23 40	23 55	23 70	23 85	15
16	24 00	24 15	24 30	24 45	24 60	24 75	24 90	25 05	25 20	25 35	16
17	25 50	25 65	25 80	25 95	26 10	26 25	26 40	26 55	26 70	26 85	17
18	27 00	27 15	27 30	27 45	27 60	27 75	27 90	28 05	28 20	28 35	18
19	28 50	28 65	28 80	28 95	29 10	29 25	29 40	29 55	29 70	29 85	19
20	30 00	30 15	30 30	30 45	30 60	30 75	30 90	31 05	31 20	31 35	20
21	31 50	31 65	31 80	31 95	32 10	32 25	32 40	32 55	32 70	32 85	21
22	33 00	33 15	33 30	33 45	33 60	33 75	33 90	34 05	34 20	34 35	22
23	34 50	34 65	34 80	34 95	35 10	35 25	35 40	35 55	35 70	35 85	23
24	36 00	36 15	36 30	36 45	36 60	36 75	36 90	37 05	37 20	37 35	24
25	37 50	37 65	37 80	37 95	38 10	38 25	38 40	38 55	38 70	38 85	25
26	39 00	39 15	39 30	39 45	39 60	39 75	39 90	40 05	40 20	40 35	26
27	40 50	40 65	40 80	40 95	41 10	41 25	41 40	41 55	41 70	41 85	27
28	42 00	42 15	42 30	42 45	42 60	42 75	42 90	43 05	43 20	43 35	28
29	43 50	43 65	43 80	43 95	44 10	44 25	44 40	44 55	44 70	44 85	29
30	45 00	45 15	45 30	45 45	45 60	45 75	45 90	46 05	46 20	46 35	30
31	46 50	46 65	46 80	46 95	47 10	47 25	47 40	47 55	47 70	47 85	31
32	48 00	48 15	48 30	48 45	48 60	48 75	48 90	49 05	49 20	49 35	32
33	49 50	49 65	49 80	49 95	50 10	50 25	50 40	50 55	50 70	50 85	33
34	51 00	51 15	51 30	51 45	51 60	51 75	51 90	52 05	52 20	52 35	34
35	52 50	52 65	52 80	52 95	53 10	53 25	53 40	53 55	53 70	53 85	35
36	54 00	54 15	54 30	54 45	54 60	54 75	54 90	55 05	55 20	55 35	36
37	55 50	55 65	55 80	55 95	56 10	56 25	56 40	56 55	56 70	56 85	37
38	57 00	57 15	57 30	57 45	57 60	57 75	57 90	58 05	58 20	58 35	38
39	58 50	58 65	58 80	58 95	59 10	59 25	59 40	59 55	59 70	59 85	39
40	60 00	60 15	60 30	60 45	60 60	60 75	60 90	61 05	61 20	61 35	40

Property of Cache County  
Engineering Dept.

Address \_\_\_\_\_

Telephone \_\_\_\_\_

This Book is manufactured of a High Grade 50% Rag Paper having a Water Resisting Surface, and is sewed with Nylon Water-proof Thread.



# INDEX

① R/W MONUMENTATION 9-25

② BK CIRCUIT 26-29

This book is manufactured of a high grade  
50% rag paper having a water resistant  
surface, and is sewed with Nylon Water-  
proof thread.

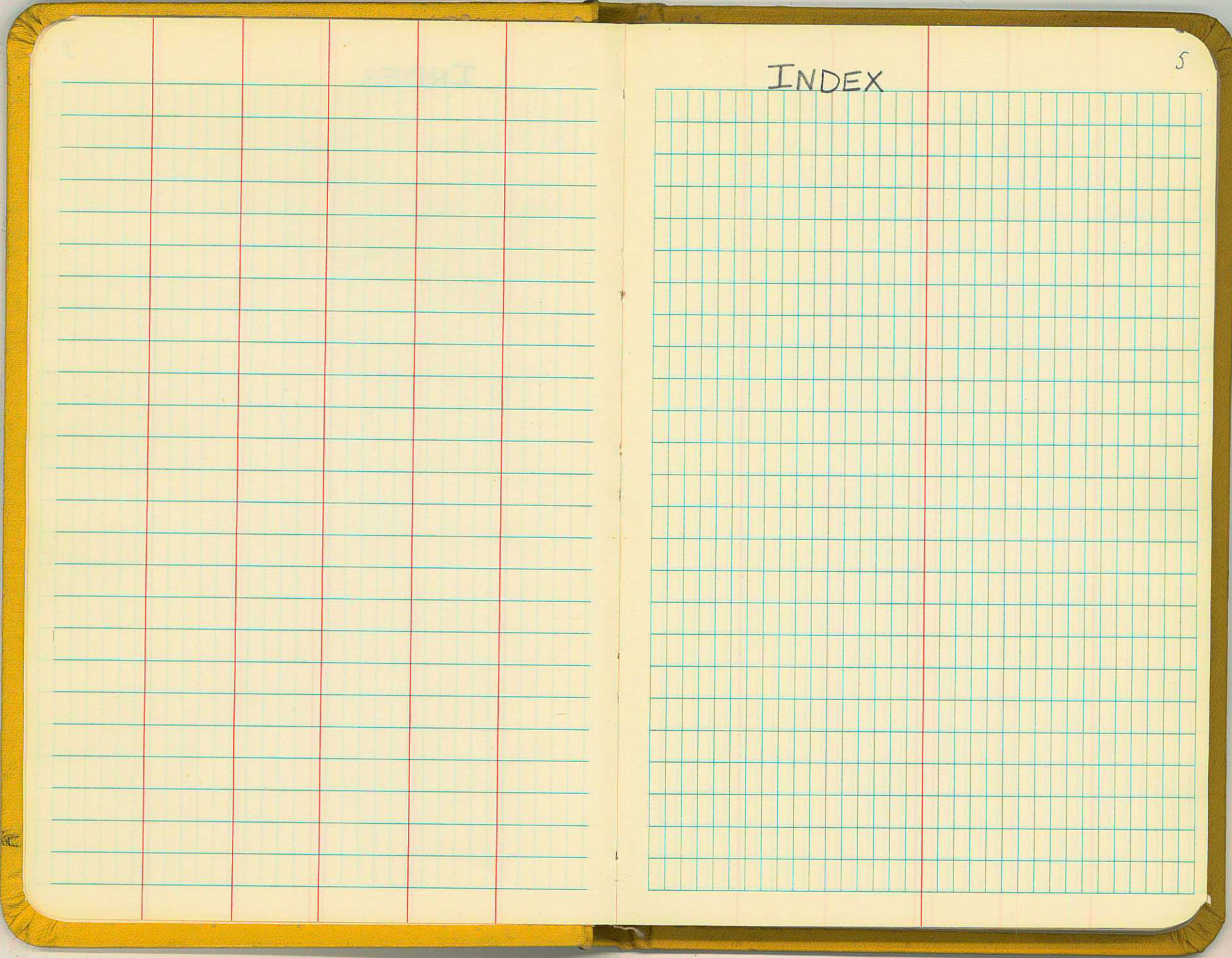






INDEX

5



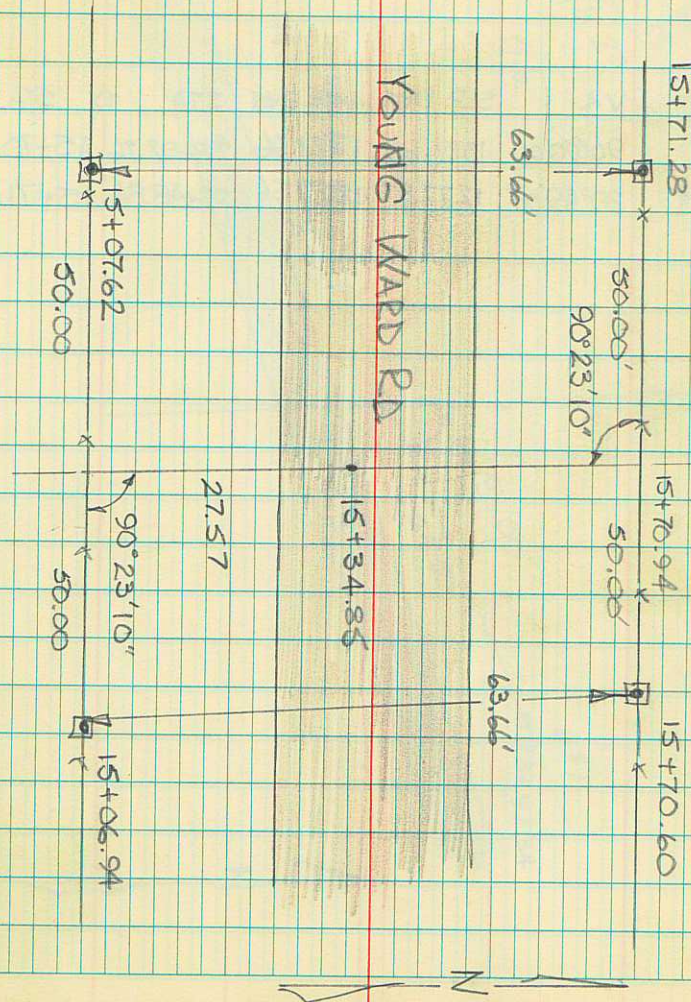


SET MFT ON R/W POINTS SHOWN  
 AT THE RIGHT. CHAINED THE  
 DISTANCE BETWEEN POINTS ON R/W  
 LINE: 63.66' BOTH SIDES.

R/W MONUMENTATION  
 CR 343 (5)

T & NOTES - WILLIAMS  
 P - WARD

6/7/76  
 8:AM WARM



9340-100



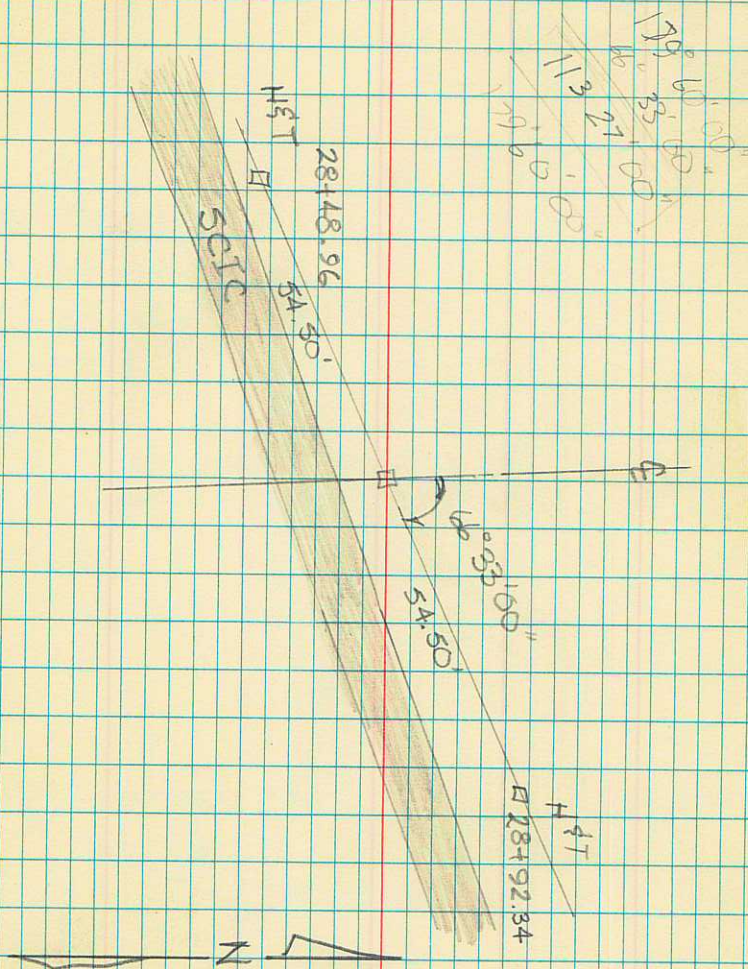
We shot the distance between the R/W Markers on the east and west sides between SPR. CREEK

SIDE	V.A.	SLP. DIST	HOR. DIST	STA	TO	STA
EAST	90°00'00"	1321.66	1321.66	28+92.26		15+70.60
WEST	89°49'00"	1277.57	1277.56	28+48.84		15+71.28

## R/W MONUMENTATION

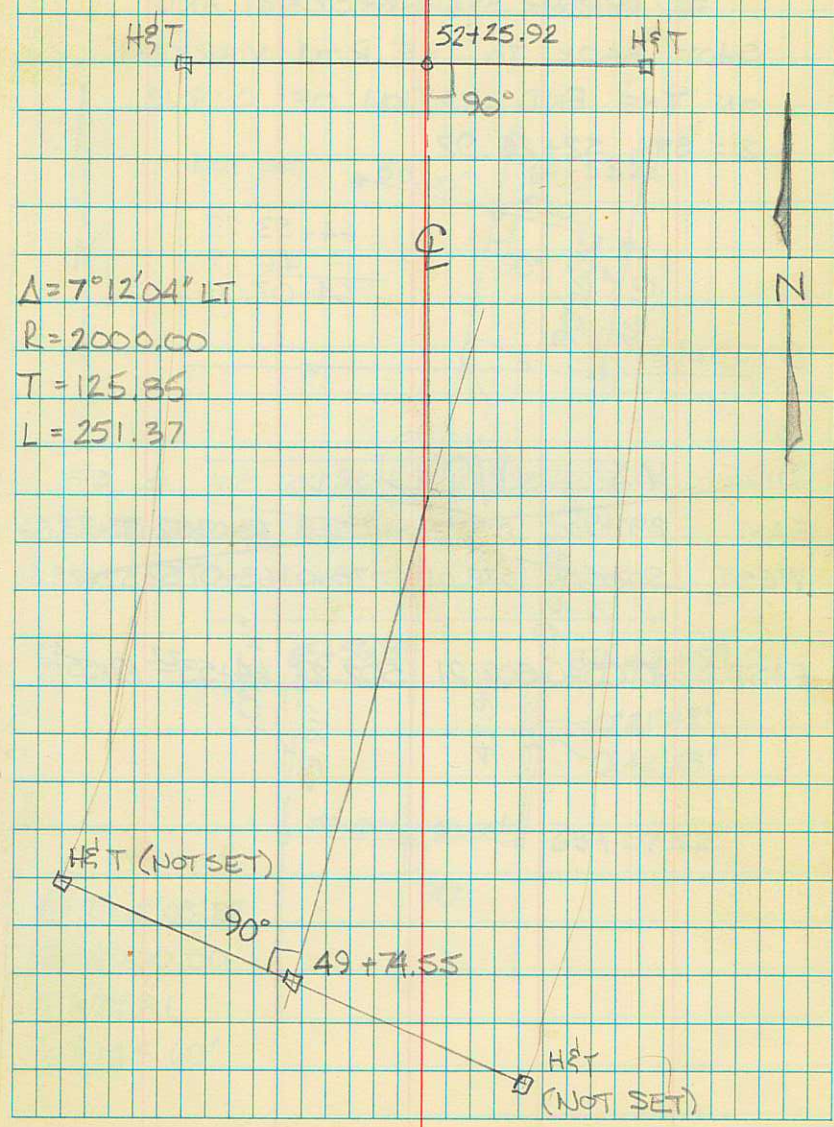
CR 343 (S)

SPRING CREEK IRRIGATION CANAL





# R/W MONUMENTATION CURVE TWO



$\Delta = 7^\circ 12' 04''$  LT  
 $R = 2000.00$   
 $T = 125.86$   
 $L = 251.37$

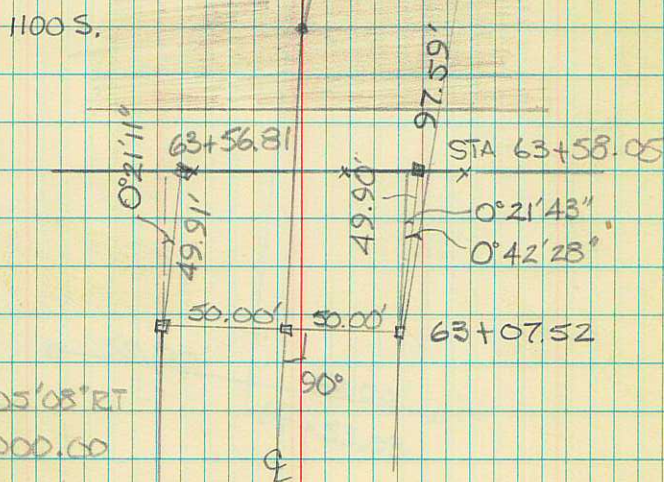
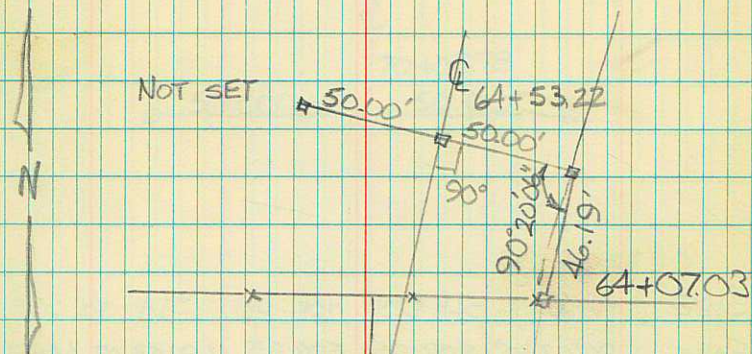


SET UP ON STA 63+07.52 AND  
 SHOT BACK TO THE R/W MARKERS  
 ON THE END STATION OF CURVE  
 2: STA 52+25.92

64+53.22  
 - 46.19  
 64+07.03

SIDE	XX	SLP	OR.DOT	STA	TO	STA
EAST	89°49'00"	1079.69	1079.68	63+07.52	52+27.84	
WEST	90°00'00"	1078.01	1078.01	63+07.52	52+29.51	
EAST	90°05'40"	502.21	502.21	64+53.22	64+55.43	

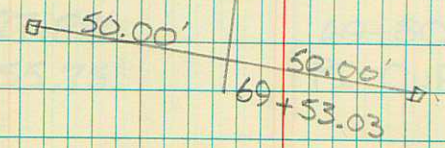
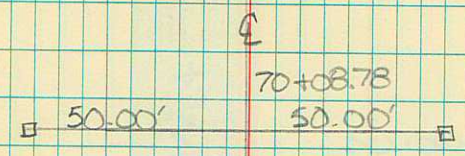
RW MONUMENTATION  
 CR 343 (S)  
 1100 SOUTH STREET



$\Delta = 2'05'05''$  RT  
 $R = 4000.00$   
 $T = 72.81'$   
 $L = 145.60'$



R/W MONUMENTATION  
 CURVE FOUR  
 CR 343(S)



SIDE	V X	SLP DIST	HOR. DIST	STA TO STA
EAST	90°02'30"	502.55	502.55	69+53.03 64+50.43



STA	V A	S D	HOR DIST	TO STA	DESCR- (PTION)
					81+32.74
69+80.90	89°40'00"	2047.22	2047.19	90+28.09	POINT ON 6th South
69+80.90	89°44'00"	1293.77	1293.76	82+74.66	
69+80.90	89°41'00"	1158.13	1158.12	81+39.02	
69+80.90	89°41'00"	1152.37	1152.36	81+33.26	
69+80.90	89°41'00"	1151.85	1151.84	81+32.74	Point on Lgn Capl.



CURVE IV  
 $\Delta = 0^\circ 42' 50''$   
 $R = 4474.42'$   
 $T = 27.88'$   
 $L = 55.75'$

70+08.78  
 69+80.90  
 PI CURVE 4



STA	to	STA	SLP DIST	VERT ∠	HOR DIST	STA
63+07 <sup>52</sup> R		52+25 <sup>92</sup> R	1081 <sup>62</sup>	90°12'10"	1081 <sup>61</sup>	63+07 <sup>52</sup>
63+07 <sup>52</sup> L		52+25 <sup>92</sup> L	1081 <sup>60</sup>	90°05'40"	1081 <sup>60</sup>	63+07 <sup>52</sup>

## DISTANCE CHECK

23

TS NOTES - WILLIAMS

8-3-76

Φ-WARD

CLOUDY, WINDY,

COOL

R/W MON

R/W MON

○ STA. 63+07<sup>52</sup>

○



L

R

R/W MON

○ STA. 52+25<sup>92</sup>

○ R/W MON

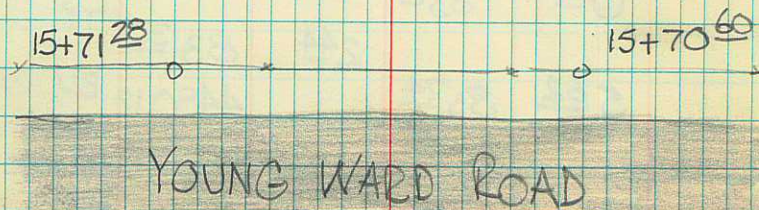
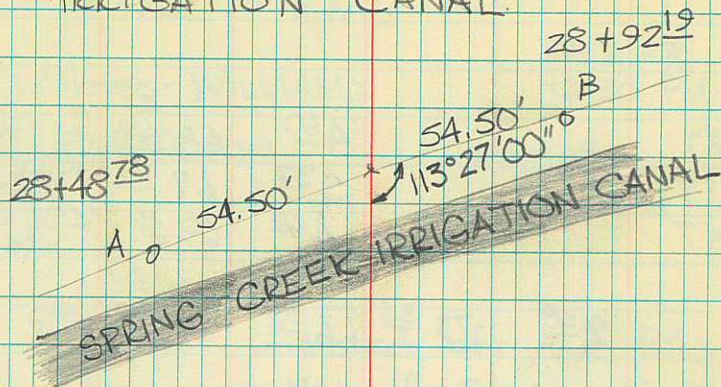


STA to STA	SLP DIST	VERT Δ	HOR DIST	STA
------------	----------	--------	----------	-----

B to 15+70 <sup>60</sup>	1321 <sup>60</sup>	89°50'00"	1321 <sup>59</sup>	28+92 <sup>19</sup>
A to 15+71 <sup>28</sup>	1277 <sup>51</sup>	89°47'00"	1277 <sup>50</sup>	<del>2848</del> 28

R/W ON THE SPRING CREEK IRRIGATION CANAL

25





	+	HI	-	EL	
HFT			4 <sup>60</sup>	68 <sup>76</sup>	Q SCIC
HFT			5 <sup>37</sup>	67 <sup>99</sup>	SCIC NW SIDE
HFT			4 <sup>20</sup>	69 <sup>16</sup>	SCIC NE SIDE
	2 <sup>38</sup>	73 <sup>36</sup>	6 <sup>80</sup>	70 <sup>98</sup>	TP
	3 <sup>60</sup>	77 <sup>78</sup>	5 <sup>19</sup>	74 <sup>18</sup>	MON YW Rd. NE SIDE
			5 <sup>35</sup>	74 <sup>02</sup>	MON YW Rd. NW SIDE
			5 <sup>23</sup>	74 <sup>14</sup>	MON YW Rd. SW SIDE
			4 <sup>83</sup>	74 <sup>54</sup>	MON YW Rd. SE SIDE
	2 <sup>51</sup>	79 <sup>37</sup>	6 <sup>65</sup>	76 <sup>86</sup>	
			4 <sup>09</sup>	79 <sup>42</sup>	BM HW89 4 YW Rd. 4479 <sup>36</sup>
	0 <sup>21</sup>	83 <sup>51</sup>			TP
	5 <sup>62</sup>	85 <sup>74</sup>	2 <sup>44</sup>	83 <sup>30</sup>	TP
				4480.12	BM R/W MON HW 89 43' NE STA 5+00.12

## Level Circuit for BMs

Notes - WILLIAMS

7-21-76  
12:30 PM

Q - RICHARDSON

Warm, Sunny, Clear  
No wind

Circuit initiated off the R/W  
Monument NW of Station 5+00.12  
of CR 343 (S).



